

STYLE AND DIMENTION OF REEL (FREE)

3 > DETAIL OF PART NO LABEL.

DATE OF MANUFACTURED	*** ** *
CODE NO.	CL684-****-51
PART NO.	DF18#-**DP-0.4V(51)
QUANTITY	2000 K0
SUPPLIER	HIROSE ELECTRIC CO.,LTD.

NOTES 1. 1 REEL : 2000 CONNECTORS.
 2. AT THE BEGINNING OF THE REEL, 30 COMPONENTS SHALL BE EMPTY.
 AT THE END OF REEL, 20 COMPONENTS SHALL BE EMPTY.
 3 > DETAIL OF PART NO. LABEL IS WRITTEN IN JAPANESE.

PART NO.	CONTACT	E	F	G	H
DF18D- 20DP-0.4V(51)	20	16.0	7.5	5.76	16.4
DF18D- 30DP-0.4V(51)	30	16.0	7.5	7.76	16.4
DF18E- 40DP-0.4V(51)	40	24.0	11.5	9.76	24.4
DF18E- 50DP-0.4V(51)	50	24.0	11.5	11.76	24.4
DF18C- 60DP-0.4V(51)	60	24.0	11.5	13.76	24.4
DF18C- 70DP-0.4V(51)	70	24.0	11.5	15.76	24.4

CODE NO. (OLD)	CL	DESIGNED	M.Goto	CHECKED	K.Akiyama	APPROVED	K.Katayose	RELEASED	
DRAWING NO.	EDC3-163684-02	DRAWN	J.Nakamura	DATE	'01.03.21	DATE	'01.03.23	DATE	'01.03.23
SCALE	10:1	PART NO.	DF18#-**DP-0.4V(51)						
UNITS	(MM)	CODE NO.	CL684						

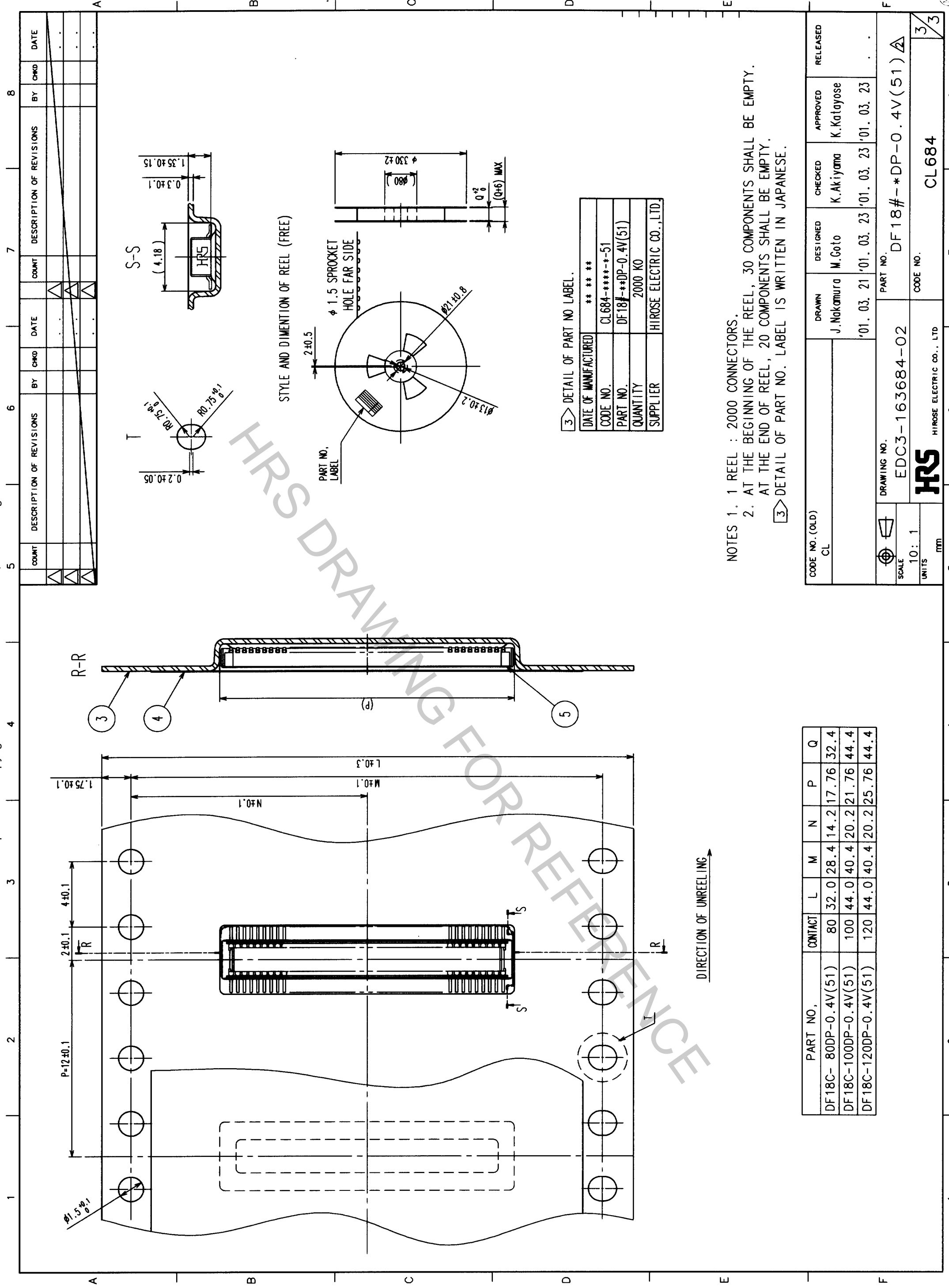
TO	



HIROSE ELECTRIC CO., LTD.

CL684

2/3



3 > DETAIL OF PART NO LABEL.

DATE OF MANUFACTURED	*** ** *
CODE NO.	CL684-****-51
PART NO.	DF18#-**DP-0.4V(51)
QUANTITY	2000 KO
SUPPLIER	HIROSE ELECTRIC CO., LTD.

NOTES 1. 1 REEL : 2000 CONNECTORS.
 2. AT THE BEGINNING OF THE REEL, 30 COMPONENTS SHALL BE EMPTY.
 AT THE END OF REEL, 20 COMPONENTS SHALL BE EMPTY.
 3 > DETAIL OF PART NO. LABEL IS WRITTEN IN JAPANESE.

PART NO.	CONTACT	L	M	N	P	Q
DF18C-80DP-0.4V(51)	80	32.0	28.4	14.2	17.76	32.4
DF18C-100DP-0.4V(51)	100	44.0	40.4	20.2	21.76	44.4
DF18C-120DP-0.4V(51)	120	44.0	40.4	20.2	25.76	44.4

CODE NO. (OLD)	CL	DESIGNED	K.Akiyama	CHECKED	K.Katayose	APPROVED	K.Katayose	RELEASED	
DRAWING NO.	EDC3-163684-02	DRAWN	J.Nakamura	DESIGNED	M.Goto	CHECKED	K.Akiyama	APPROVED	K.Katayose
SCALE	10:1	PART NO.	DF18#-**DP-0.4V(51)	DESIGNED	'01.03.21	CHECKED	'01.03.23	APPROVED	'01.03.23
UNITS	MM	DRAWING NO.	DF18#-**DP-0.4V(51)	DESIGNED	DF18#-**DP-0.4V(51)	CHECKED	DF18#-**DP-0.4V(51)	APPROVED	DF18#-**DP-0.4V(51)
		CODE NO.	CL684	DRAWN	J.Nakamura	CHECKED	K.Akiyama	APPROVED	K.Katayose
				DRAWN	J.Nakamura	CHECKED	K.Akiyama	APPROVED	K.Katayose

TO